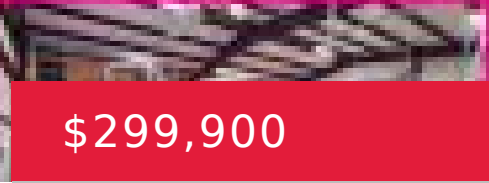
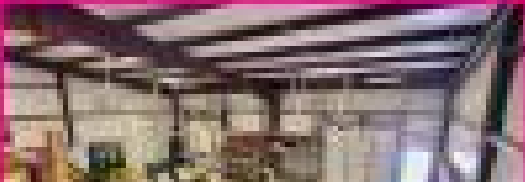




1103 E JAVA STREET, CARTHAGE, MO
4.09 ACRES | 8,260 SQ. FT



\$299,900

1103 JAVA

<https://kwelevate.org>

- Commercial
- Land
- Active



Miscellaneous

Compensation Disclaimer: The listing broker's offer of compensation is made only to participants of the MLS where the listing is filed.

Quadrant: 21 - 30

Tax Annual Amount: \$1,847.98

Phase: Yes

Variable Rate: No

Listing Office

Listing Office ShortId: 3070

ListingOfficeName: KELLER WILLIAMS REALTY ELEVATE

Listing Office Phone: (417)
623-9900

Listing Office Address: 619 South Florida, Joplin, MO
64801

