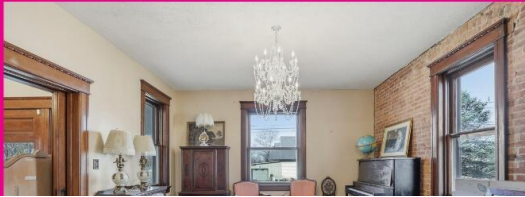




109 PINE STREET, CARTERVILLE

6 BEDROOMS | 2.5 BATHS | 4,896 SQ.FT



\$263,000

109 PINE, CARTERVILLE, MO, 64835

<https://kwelevate.org>

Located on a well-known corner of Carterville, 109 Pine is a true Colonial landmark dating back to 1896—recognized by anyone who's traveled Main Street or explored Route 66. Set behind an iron fence on nearly an acre of mature trees, the property offers a park-like setting with presence, privacy, and visibility that's hard to replicate. [...]

- 6 beds
- 3 baths
- Single Family - Freestanding
- Residential
- Active
- 4896 sq ft



Basics

Category: Residential

Status: Active

Bathrooms: 3 baths

Year built: 1896

Bathrooms Half: 1

County: Jasper

Type: Single Family - Freestanding

Bedrooms: 6 beds

Area: 4896 sq ft

Bathrooms Full: 2

Rooms Total: 17



Building Details

Building Area Total: 4896 sq ft	Roof: Shingle
Levels: 2 Stories	Construction Materials: Brick, Stone
Fencing: Chain Link, Wrought Iron	Lot Features: Corner Lot
LotSizeDimensions: 160x185	Basement: Partial, Sump Pump, Unfinished

School Information

High School District: Webb City	Middle Or Junior School: Webb City
--	---

Miscellaneous

Listing Terms: 1031 Exchange, Cash, Conventional, FHA, VA Loan	Foundation Details: Stone
Architectural Style: Historic Desig, Colonial	Tax Annual Amount: \$2

Amenities & Features

Interior Features: Ceiling Fan(s), Counters - Granite	Patio And Porch Features: Covered, Deck, Porch, Wrap Around
Appliances: Refrigerator, Range - Gas, Disposal, Dishwasher	Exterior Features: Balcony
Flooring: Ceramic, Wood	Sewer: Sewer - City
Heating: Natural Gas, Central	Pool Features: Pool - In Ground

Nearby Schools

Elementary School: Webb City AREA





Courtesy of

List Office Name: KELLER WILLIAMS REALTY ELEVATE

